

PART OF S.W. 1/4
SECTION 33, T.7N., R.1W., S.L.B. & M.

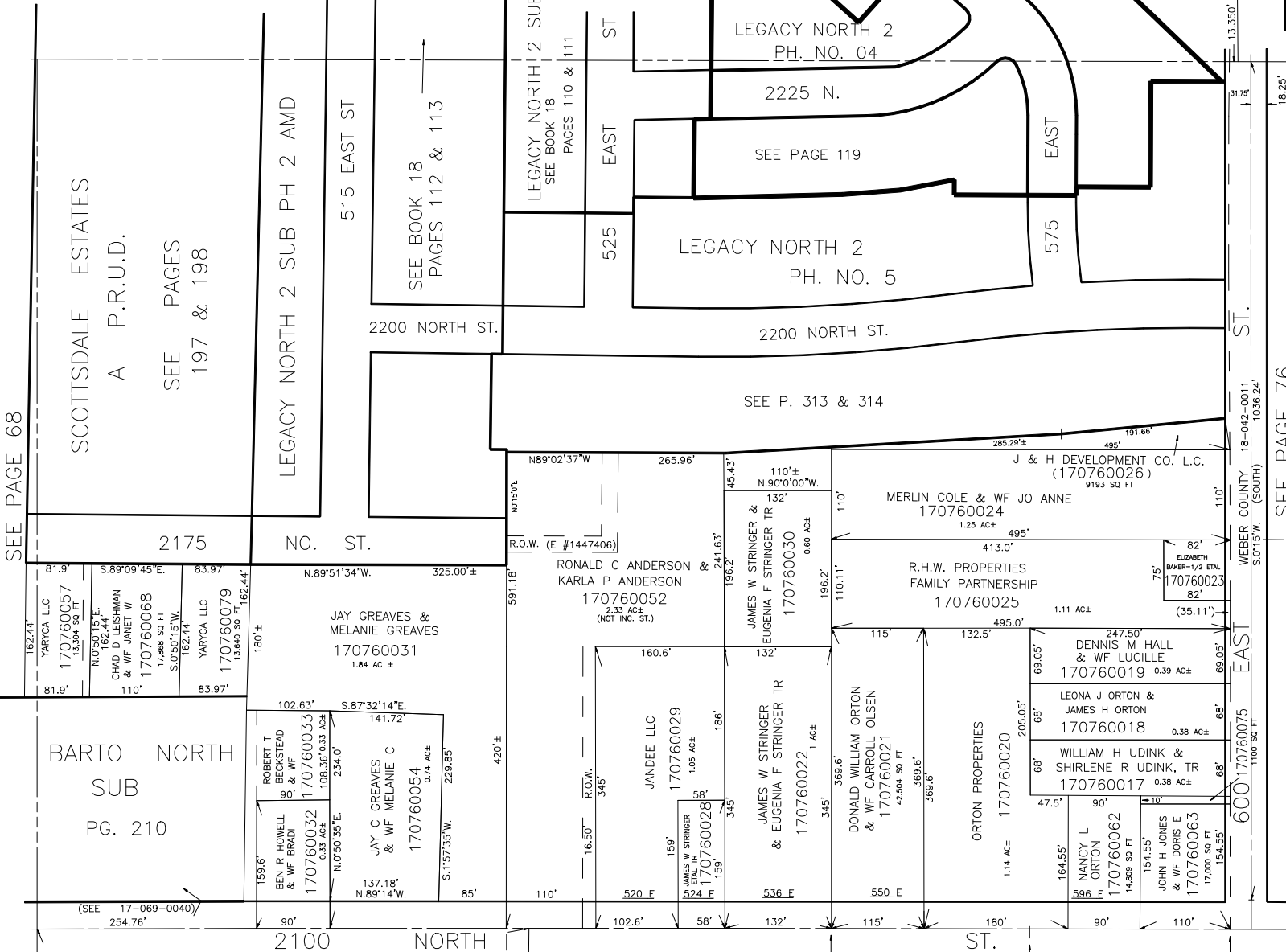
IN NORTH OGDEN CITY

SCALE 1" = 100'

SEE BOOK 18, PAGE 42

TAXING UNIT: 10

SEE 180420010



SEE PAGE 68

SEE PAGE 76

SEE PAGE 76-2

17 NORTH 1571.46' S.W. COR. of SEC. 33, T.7N., R.1W.

R.B. 2-70